

Working at Heights Assessment

4 Parramatta Square

12 Darcy Street, Parramatta NSW 2150

Walker Corporation

October 2021

Client No: W0045

Job No: 96452S

Executive Summary

Prensa Pty Ltd (Prensa) was engaged by Walker Corporation to undertake a Working at Heights (WAH) Assessment for 4 Parramatta Square located at 12 Darcy Street, Parramatta NSW 2150. The assessment was undertaken to provide the building owner with an understanding of how fall risk issues are being managed at the building and where gaps may be present that require action to rectify. The WAH Assessment was undertaken by Yasmine Menich, Cody Henderson and David Stephenson of Prensa on 23rd September 2021 with the assistance of Tony Trajceski, Senior Facilities Manager for Walker Corporation.

The WAH Assessment comprised a review of available documentation, interviews with site personnel and a visual inspection of reasonably accessible areas at the Site. Photographs taken during the assessment are presented in **Appendix A** of this report. Criteria used for completing the risk assessment is detailed in **Appendix B**.

A risk assessment was completed for the work at height activities conducted at the site and presented in **Appendix C**. Results of the risk assessment are summarised in the Table below:

Risk Level	Number
High	0
Medium	2
Low	7

Recommendations arising from the risk assessment are detailed in **Section 9** and summarised below:

Recommendations to Address Medium Risks

The following recommendations have been raised to address the **Medium** risks identified:

Podium 3, Western Elevation Roof

Install a sign displaying the Safe Weight Limit (SWL) of the glass.

Level 1, OSD Tank Room

- Engage a competent person to inspect and maintain anchor points on an annual basis; and
- Install a ladder gate to the top of the step ladder to reduce the risk of falls.

Recommendations to Address Low Risks

The following recommendations have been raised to address the **Low** risks identified:

Level 34

- Replace/repair the corroded carabiner clips provided to the cooling tower ladder chains;
- Install low headroom warning signage adjacent the rung ladders accessing the potable drinking water tank; and
- Provide highlighting to the pipework located at the base of the potable water tank, right ladder.

Podium 3, Western Elevation Roof

Remove building materials obstructing the entryway.

Statement of Limitations

This document has been prepared in response to specific instructions from Walker Corporation to whom the report has been addressed. The work has been undertaken with the usual care and thoroughness of the consulting profession. The work is based on accepted standards, practices of the time the work was undertaken. No other warranty, expressed or implied, is made as to the professional advice included in this report.

The report has been prepared for the use by Walker Corporation and the use of this report by other parties may lead to misinterpretation of the issues contained in this report. To avoid misuse of this report, Prensa advise that the report should only be relied upon by Walker Corporation and those third parties where the purposes for which the third parties intend to use the report are the same as those of Walker Corporation. The report should not be separated or reproduced in part and Prensa should be retained to assist other professionals who may be affected by the issues addressed in this report to ensure the report is not misused in any way.

Prensa is not a professional quantity surveyor (QS) organisation. Any areas, volumes, tonnages or any other quantities noted in this report are indicative estimates only. The services of a professional QS organisation should be engaged if quantities are to be relied upon.

Reliance on Information Provided by Others

Prensa notes that where information has been provided by other parties in order for the works to be undertaken, Prensa cannot guarantee the accuracy or completeness of this information. Prensa does not warrant the accuracy or completeness of this information and does not accept liability arising from inaccuracies or omissions in information provided to Prensa by third parties. No indications were found during our investigations that information contained in this report, as provided to Prensa, is false.

Recommendation for Further Study

The industry recognised methods used in undertaking the works may dictate a staged approach to specific investigations. The findings therefore of this report may represent preliminary findings in accordance with these industry recognised methodologies. In accordance with these methodologies, recommendations contained in this report may include a need for further investigation or analytical analysis. The decision to accept these recommendations and incur additional costs in doing so will be at the sole discretion of Walker Corporation and Prensa recognises that Walker Corporation will consider their specific needs and the business risks involved. Prensa does not accept any liability for losses incurred as a result of Walker Corporation not accepting the recommendations made within this report.

Table of Contents

1	Introduction	5
2	Objective	5
3	Scope of Works	5
4	Background	6
4.1	Definition of a Fall Hazard	6
4.2	Legislative Requirements	6
4.3	Key Definitions	7
5	Methodology.....	7
5.1	Discussions on Site	7
5.2	Site Inspection.....	8
5.2.1	Work at Height Activities	8
5.2.2	Working at Heights Areas	8
6	Limitations.....	8
7	Findings	9
7.1	General Findings	9
7.2	Upper Rooftop	9
7.3	Rooftop	9
7.4	Level 34, Mechanical Plant Room	9
7.4.1	Cooling Tower Area	9
7.4.2	Potable Drinking Water Tank	10
7.5	Level 1, OSD Tank Room	10
7.6	Podium 3	10
7.6.1	Eastern Elevation Roof	10
7.6.2	Western Elevation Roof	10
7.7	Exterior, Ground Level, Northern Awning	11
8	Work at Height Risk Assessment.....	11
9	Recommendations	11
9.1	Recommendations to Address Medium Risks	11
9.1.1	Podium 3, Western Elevation Roof	11
9.1.2	Level 1, OSD Tank Room	11
9.2	Recommendation to Address Low Risks	12

9.2.1 Level 34, Mechanical Plant Room 12

9.2.2 Podium 3, Western Elevation Roof 12

List of Appendices

Appendix A: Photographs

Appendix B: Risk Assessment Criteria

Appendix C: WAH Risk Assessment

Appendix D: Schematics

1 Introduction

Prensa Pty Ltd (Prensa) was engaged by Walker Corporation to undertake a Working at Heights (WAH) Assessment for 4 Parramatta Square located at 12 Darcy Street, Parramatta NSW 2150. The assessment was undertaken to provide the building owner with an understanding of how fall risk issues are being managed at the building and where gaps may be present that require action to rectify. The WAH assessment was undertaken by Yasmine Menich, Cody Henderson and David Stephenson of Prensa on Thursday 23rd September 2021 with the assistance of Tony Trajceski, Senior Facilities Manager for Walker Corporation.

2 Objective

The objective of this Assessment was to determine the most practicable method of controlling risks of fall at the Site.

To achieve the above objectives, the requirements of the following Legislation, Codes and Australian Standards was reviewed:

- State based *Occupational/Work Health and Safety Acts*
- State based *Occupational/Work Health and Safety Regulations (Regulations)*;
- Building Code of Australia;
- Australian Standard (AS) 1657, *Fixed Platforms, Walkways, Stairways and Ladders – Design Construction and Installation*; and
- Code of Practice for *Managing the Risk of Falls at Workplaces, Safe Work Australia*.

3 Scope of Works

The scope of this Assessment included a review of WAH activities under the management of Walker Corporation and included identification of:

- The method of access to the nominated areas;
- The methods of access to plant and equipment present on the nominated areas;
- Hazards associated with working at height activities and tasks undertaken at the nominated areas; and
- Recommendations for elimination or control of these hazards.

Contractor management procedures implemented by Walker Corporation as well as review of contractor systems of work or work procedures are also not included in the current scope of works.

The Assessment also does not constitute an evaluation of the adequacy of load ratings and engineering assessment of fall protection measures installed.

4 Background

Walker Corporation engage contractors to service and maintain plant and equipment on the roof of the Site. Prensa was engaged to identify discrepancies between what risk controls for fall hazards exists on site and the legislative requirements. Prensa was also requested to identify whether any deficiency is considered to pose an unacceptable risk to health & safety when considering the following:

- Effectiveness of existing risk controls provided;
- The magnitude of the risk; and
- The availability of risk mitigation solutions which are considered acceptable industry practice.

4.1 Definition of a Fall Hazard

In this report, the meaning of a fall hazard includes:

- Fall from one level to another that is reasonably likely to cause an injury; and
- Falling objects that can cause serious injuries.

The Regulations stipulates that the Person Conducting Business or Undertaking (PCBU) or an employer must, so far as is reasonably practicable, **identify** any task that is undertaken by an employee/worker in a workplace that involves a fall hazard including:

- On any plant or structure being constructed, demolished, inspected, tested, maintained, repaired or cleaned;
- On a fragile, slippery or potentially unstable surface;
- Using equipment to gain access to an elevated level or to undertake the task at an elevated level;
- On a sloping surface on which it is difficult to maintain balance;
- In close proximity to an unprotected edge; and
- In close proximity to a hole, shaft or pit that is of sufficient dimensions to allow a person to fall into the hole, shaft or pit.

4.2 Legislative Requirements

An employer must ensure that each identified task which involves a risk of a fall is appropriately controlled, so far as is reasonably practicable, by one of the following:

- Level 1 – Eliminate the fall hazard by performing the work on ground or solid construction.
- Level 2 – Use a passive fall protection device e.g. edge protection.
- Level 3 – Use a work positioning systems e.g. which limits movements thereby minimising access to areas where a fall may occur.
- Level 4 – Use a fall arrest system e.g. a harness.
- Level 5 – Use a ladder or implement administrative controls e.g. waring signage.

The hierarchy begins with the level 1 control elimination- the most effective hazard control strategy. A lower order control can only be used when it is not reasonably practicable to use a higher level of control.

A PCBU or an employer must ensure that emergency procedures are established, in accordance with the Regulations, prior to a task being undertaken, following the implementation of control measures associated with reducing fall risks. Emergency procedures must enable the rescue of an employee in the event of a fall and the provision of first aid to an employee who has fallen. A PCBU or an employer must also ensure that emergency procedures can be undertaken immediately after a fall has taken place and that any risks associated with carrying out the emergency procedure are eliminated or reduced.

4.3 Key Definitions

The Regulations define a **fall** as an involuntary movement that results in a fall greater than 2.0 m. Additional terms and definitions, as outlined in the Regulations, are included below.

Solid construction means an area that has—

- A surface that is structurally capable of supporting people, material and any other loads intended to be applied to it;
- Barriers around its perimeter and any open penetrations to prevent a fall from the area;
- An even and readily negotiable surface and gradient; and
- A safe means of access and egress.

Passive fall prevention device: Material, equipment or a combination of material and equipment that is designed for the purpose of preventing a fall and that following initial installation, does not require any ongoing adjustment, alteration or operation by any person to ensure the integrity of the device in performing its intended function. Passive fall prevention devices include temporary work platforms, roof safety mesh and guard railing.

Work positioning system: An industrial rope access system, travel restraint system or any other equipment other than a temporary work platform that enables a person to be positioned and safely supported at a work location for the duration of the task being undertaken at height. An example includes a harness or belt system in which the person is attached to a static line or anchorage point to physically restrain them from reaching an edge or elevated surface fall hazard.

Fall arrest system: Equipment, material or a combination of equipment or material that is designed to arrest the fall of a person. Fall arrest systems include industrial safety nets, catch platforms and safety harness systems (other than a travel restraint system).

5 Methodology

The WAH Assessment comprised a review of available documentation, interviews with site personnel and a visual inspection of reasonably accessible areas at the Site and included the following steps:

5.1 Discussions on Site

Discussions were held on Site to establish roof access procedures implemented by Walker Corporation. Frequency of access for various working at height activities was also established.

5.2 Site Inspection

A walk through of the nominated areas of the Site was undertaken to identify fall protection systems installed at the Site. During the site inspection and through discussions with the site contract, Prensa reviewed routine maintenance tasks undertaken at this site which have potential risk of falls such as cleaning of windows, maintenance of plant at height and on roofs etc.

For each of the specific hazards identified on site, adequacy of existing control measures implemented was documented e.g. ladders, guard rails, anchor points, walking platforms etc.

5.2.1 Work at Height Activities

From observations made via the site inspection it is assumed that the following work at height activities may be undertaken at the Site:

- Maintenance of plant and equipment;
- Solar panel maintenance;
- Cleaning of windows and external façade;
- Repair of roof leaks;
- Maintenance of above ground storage tanks; and
- Maintenance of lights and other fixtures

5.2.2 Working at Heights Areas

The following areas were inspected

- Upper Rooftop;
- Rooftop;
- Level 34, Mechanical Plant Room;
- Podium 3, western roof area;
- Podium 3, eastern roof area; and
- Level 1, OSD tank room.

The areas where recommendations have been raised are indicated on the marked up schematics in **Appendix D**.

Observations made during the inspection of each of the above areas are detailed in **Section 7: Findings**.

6 Limitations

The scope of the WAH Assessment was limited to buildings or areas that have been provided with adequate means to safely access areas at height.

Should any further fall protections systems or potential fall risks be identified onsite, a risk assessment should be conducted in accordance with the methodology outlined in this report and appropriate control measures implemented.

7 Findings

7.1 General Findings

In general, it was found that the infrastructure and controls observed were considered to be effective in reducing the risk of falls to so far as reasonably practicable. These included:

- Access to roof areas was secured through locked doors;
- Fall arrest systems, such as anchor points and static lines, provide in areas in close proximity to roof and balcony edges;
- A Building Maintenance Unit (BMU) was provided for window cleaning as well as façade inspections;
- Access was restricted via the use of keys specific for roof access which had to be obtained from the security desk;
- Hand rails for stairs and ladders were provided for safe entry and exit;
- Parapet walls, guard rails and walkways were provided to reduce the risk of falls;
- The completion of a Site Access Form, including approval for working at heights, and task-specific Safe Work Method Statements (SWMS) prior to contractors commencing works; and
- Access granted to authorised personnel only.

Detailed findings of the areas inspected are presented in the following sub-sections:

7.2 Upper Rooftop

The Upper Rooftop was accessed via a metal rung ladder from the Rooftop area below (**Photo 1**). Various telecommunications equipment was present in this area. A fall from the fixed rung ladder or the landing would result in a fall to the floor of the Rooftop. A metal guard rail with a mid-rail was provided around the entire Upper Rooftop.

7.3 Rooftop

A staircase was provided to access the Rooftop which was provided with a locked door, only accessible with a roof access key. A fall from the Rooftop area would result in a person falling to either level 34 below or to ground level. Other features noted in this area are listed below:

- Anchor points and a static line were provided throughout the rooftop (**Photo 2**). A yearly inspection report, dated 24/05/2021, was sighted;
- A BMU rail was provided, the BMU was accessed from Level 34 and was reported to be used for window cleaning and façade maintenance on a monthly basis. A quarterly BME Inspection report (dated 01/07/2021) was observed; and
- The Rooftop edge was observed to be provided with a parapet wall (**Photos 3**).

7.4 Level 34, Mechanical Plant Room

Level 34 contains access to the BMU and the Mechanical Plant Room including the six (6) cooling towers and potable drinking water tank.

7.4.1 Cooling Tower Area

The upper sections of the six (6) cooling towers in the Level 34 Mechanical Plant Room were provided with an elevated platform. The platforms were accessed via fixed steel rung ladders with cages. Chains were provided at the top of the ladders in place of ladder gates. It was noted that a number of the

chains' carabiner clips were corroded and difficult to open (**Photo 4**), presenting a risk of falls when accessing this area.

7.4.2 Potable Drinking Water Tank

Two metal rung ladders were provided for access to the potable drinking water tank, understood to be accessed on an ad-hoc basis. The rung ladders stiles were noted to extend approximately 1,000 mm above the top rung of the ladder.

However the following was noted:

- Reduced head clearance was provided above the water tank and tank access hatch (**Photo 5**); and
- Pipework at the base of the right ladder was noted to be within the 200 mm of clearance from the back edge of the rung, as specified in AS1657, presenting a potential trip hazard when exiting the ladder (**Photo 6**).

7.5 Level 1, OSD Tank Room

The On-site Stormwater Detention (OSD) tank was reported to be accessed on a quarterly basis for the purposes of maintenance and inspection of the OSD tank and yearly for inspecting fire penetrations. A step ladder with handrails was provided to access the upper section of the tank which was provided with guard railing. Anchor points were provided for accessing internal areas of the tank. Two (2) gantry cranes were also provided to the top of the OSD tank for confined space access. The Senior Facilities Manager explained that the cranes have not yet been used and would be inspected prior to use.

However the following was noted:

- Inspection tags for the fall arrest points were observed to be out of date (**Photo 7**); and
- Contractors undertaking inspections of fire penetrations were noted to have to stand adjacent the ladder edge (**Photo 8**), however, a ladder gate or closure system had not been installed to reduce the risk of a fall when inspecting the penetrations.

7.6 Podium 3

7.6.1 Eastern Elevation Roof

The eastern rooftop of Podium 3 was provided with a corrugated metal roof area with a live edge surrounding the perimeter. Access to the rooftop area was for the purposes of inspection of roof areas, and maintenance.

Access to the corrugated roof area was provided via a locked door located along the western wall of the internal plant room. Other features noted in this area are listed below:

- Two (2) rung ladders with landings were provided to access the corrugated roof area; and
- Anchor points and a static line was provided to the corrugated roof area, last inspected 24/05/2021.

7.6.2 Western Elevation Roof

The western rooftop of Podium 3 consisted of a coated concrete area with an adjacent corrugated metal roof and trafficable glass over the sky bridge. Access to the rooftop area was for the purposes of inspection of roof areas, maintenance and glass cleaning. Anchor points, last inspected 24/05/2021, were provided throughout the roof area to facilitate maintenance activities.

Access to the rooftop area was provide via a locked door, with signage displayed stating 'No Entry Authorised Persons Only', located in the south western corner of the internal plant room. However, the following was noted:

- No indication of the load bearing capacity for the trafficable glass roof was observed (**Photo 9**); and
- Building materials were stored in front of the door, obstructing access (**Photo 9**).

7.7 Exterior, Ground Level, Northern Awning

The northern awning was observed to be provided with a ladder bracket, first man up strop and static line (inspected 24/05/2021). A fall from the awning would result in a fall approximately 4 m to the ground level below.

8 Work at Height Risk Assessment

Following the identification of potential areas where fall hazards were present, a risk assessment was conducted which considered the following:

- Tasks that maybe undertaken;
- The location and height of the area;
- Frequency at which the area is accessed;
- Qualification and skill level (competency) of the worker accessing the area; and
- The nature of hazards and risk control measures currently in place.

Provisions to prevent falls in each area were compared to the requirements detailed in AS1657:2013. Photographs to support the gaps and findings are provided in **Appendix A**. Each area where potential risk of fall was noted was assigned a likelihood and consequence value in accordance with the risk assessment guide provided in **Appendix B** of this report. An overall risk rating of **Low**, **Medium** or **High** was assigned to each area using the risk matrix also provided in **Appendix B** of this report. The risk assessments completed for each area where potential for falls was noted is provided in **Appendix C** of this report. Recommendations for the implementation of additional fall risk control measures are also detailed in **Appendix C**, where required and also summarised in Section 9. Marked up site layouts to indicate areas where recommendations have been raised are included in **Appendix D**.

9 Recommendations

A total of two (2) **Medium** and seven (7) **Low** risks have been identified at this Site.

Recommendations for further controls to address the Medium and Low risks are presented below.

9.1 Recommendations to Address Medium Risks

The following recommendations have been raised to address the **Medium** risks identified:

9.1.1 Podium 3, Western Elevation Roof

Install a sign displaying the Safe Weight Limit (SWL) of the glass.

9.1.2 Level 1, OSD Tank Room

- Engage a competent person to inspect and maintain anchor points on an annual basis; and
- Install a ladder gate to the top of the step ladder to reduce the risk of falls.

9.2 Recommendation to Address Low Risks

The following recommendations have been raised to address the **Low** risks identified:

9.2.1 Level 34, Mechanical Plant Room

- Replace/repair the corroded carabiner clips provided to the cooling tower ladder chains;
- Install low headroom warning signage adjacent the rung ladders accessing the potable drinking water tank; and
- Provide highlighting to the pipework located at the base of the potable water tank, right ladder.

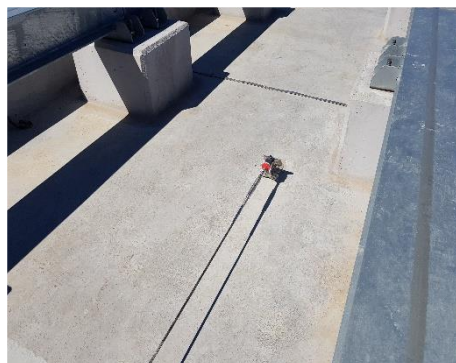
9.2.2 Podium 3, Western Elevation Roof

Remove building materials obstructing the entryway.

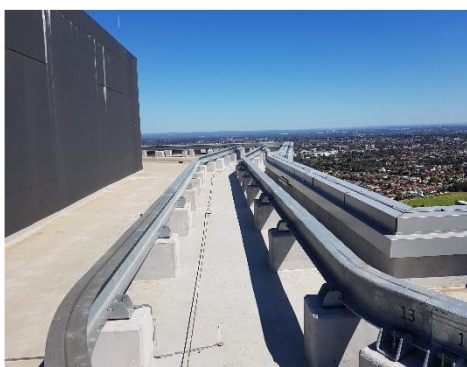
Appendix A: Photographs



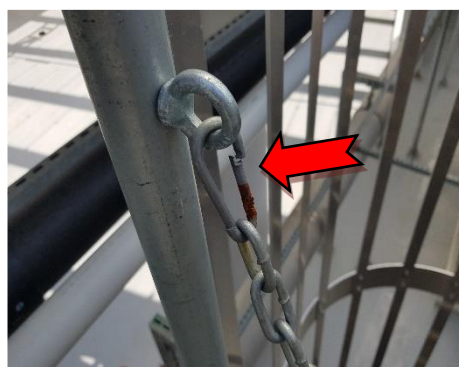
1. Upper Rooftop – The roof was provided with a rung ladder, with stiles extending approximately 1,000 mm, for access.



2. Rooftop– Static lines observed throughout roof area.



3. Rooftop – Parapet walls provided



4. Level 34, Mechanical Plant Room – A Metal Rung ladder was provided for access to the upper level of the cooling towers. It was observed that the carabiners on the ladder chain were corroded.



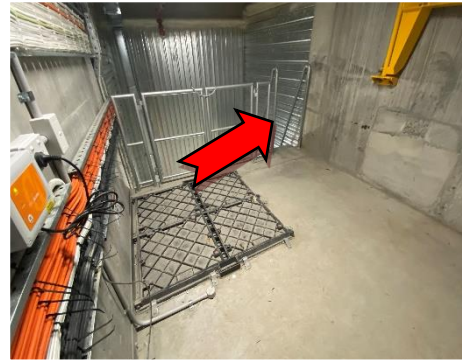
5. Level 34, Mechanical Plant Room – Restricted head height at the top of the Potable Drinking Water Tank.



6. Level 34, Mechanical Plant Room – The pipework at the base of the western ladder was observed to obstruct the rear ladder clearance.



7. Level 1, OSD tank – The inspection tags for the anchor points at the top of the tank were observed to be out of date.



8. Level 1, OSD tank – The landing at the top of the step ladder was not provided with a gate, increasing the risk of a fall whilst working in close proximity.



9. Podium 3, Western Elevation Roof – Glass Safe Weight Limit was not displayed and building materials were observed to obstruct the entrance.

Appendix B: Risk Assessment Criteria

Risk Matrix

Risk is the combination of the probability (likelihood) of a specific unwanted event and the potential consequences if it should occur.

Likelihood: The likelihood of a hazardous event occurring is detailed in **Table 1** below.

Table 1: Risk Likelihood Rating	
Likelihood	Description
Rare	The event may occur but only in exceptional circumstances
Unlikely	The event could occur at some circumstances
Possible	The event should occur sometime
Likely	The event will probably occur
Almost Certain	The event is expected to occur in normal circumstances

Consequence: Consequence refers to the severity of an outcome of an event or situation

Table 2: Risk Consequence Rating	
Consequence	Potential Consequence
Insignificant	No injuries, low financial loss
Minor	First aid treatment, medium financial loss
Moderate	Individual injury and/or significant damage to asset, high financial loss
Major	Single death and/or extensive injuries, major financial loss
Catastrophic	Multiple deaths, huge financial loss

Determination of Risk

The risk level is determined by combining the likelihood and consequences presented in the above two tables. The risk level is categorised in the following manner:

Table 3: Risk Level Matrix					
Consequence	Likelihood				
	1 - Rare	2 - Unlikely	3 - Possible	4 - Likely	5 - Almost Certain
5 - Catastrophic	Medium	Medium	High	High	High
4 - Major	Low	Medium	Medium	High	High
3 - Moderate	Low	Low	Medium	Medium	High
2 - Minor	Low	Low	Low	Medium	Medium
1 - Insignificant	Low	Low	Low	Low	Medium

Appendix C: WAH Risk Assessment

Appendix D - Work At Height Risk Assessment

Item #	Location	Activity	Factors Affecting Likelihood of Fall										Factors Affecting Consequence of Fall		Current Risk Controls	Deficiencies	Likelihood	Consequence	Risk	Recommended Additional Risk Controls	Photo Reference	Map Reference	
			Hazard Description	Carry Equipment	Three points of contact	Work within 2 m of edge	Operator facing the edge	Pitch	Trip Hazard Present	Occupancy below	Condition / maintenance of equipment	Frequency of Access	Access By	Height of fall									Nature of landing
1	Upper Rooftop	Telecommunications equipment Maintenance	Person falling off roof	Single hand carried tools	No	No	Yes	Flat	No	Unlikely	Good	Less Frequently than Yearly	Maintenance personnel	2m to 6 m	Flat hard stand	<ul style="list-style-type: none"> Fixed rung ladder provided with stiles extending approximately 1,000 mm from the top rung; and Guard rails provided to perimeter of roof area. 	No deficiencies observed	Rare	Major	Low	No additional risk controls	Photo 1	-
2	Rooftop	Façade Maintenance / Window Cleaning	Person falling off roof	Single hand carried tools	No	Yes	Yes	Flat	No	Transient	Good	Quarterly	Maintenance personnel	> 6m	Flat hard stand	<ul style="list-style-type: none"> Access was secured with signage stating 'No Entry Authorised Persons Only' displayed at entry; Anchor points and static lines provided, last inspected 25/05/2021; BMU provided for façade maintenance, last maintained 1/07/2021; and Parapet wall provided to roof edge. 	No deficiencies observed	Rare	Major	Low	No additional risk controls	Photos 2-3	-
3	Level 34, Mechanical Plant Room	Cooling tower maintenance	Person falling off ladder	Limited to tool belt equipment	Yes	Not Applicable	Not Applicable	> 35 Deg	No	Unlikely	Fair	Quarterly	Maintenance personnel	2m to 6 m	Flat hard stand	<ul style="list-style-type: none"> Elevated platforms with guard railing were provided to the upper sections of the cooling towers; Caged rung ladders were provided to access the elevated platforms; and Chains were provided at the top of the ladders, in place of ladder gates. 	It was noted that a number of the chains' carabiner clips were corroded and difficult to open, presenting a risk of falls when accessing this area.	Unlikely	Moderate	Low	Replace/repair the corroded carabiner clips provided to the ladder chains.	Photo 4	Level 34 E4, F4 & F5
4	Level 34, Mechanical Plant Room	Potable drinking water tank maintenance	Person falling off tank	Limited to tool belt equipment	Yes	Yes	No	Flat	No	Unlikely	Good	Less Frequently than Yearly	Specialist	2m to 6 m	Flat hard stand	<ul style="list-style-type: none"> Fixed rung ladders, with stiles extending approximately 1,000 mm from the top rung, were provided to access the top of the water tank. 	<ul style="list-style-type: none"> Reduced head clearance was provided above the water tank and tank access hatch; and Pipework at the base of the right ladder was noted to be within the 200 mm of clearance from the back edge of the rung, as specified in AS1657, presenting a potential trip hazard when exiting the ladder. 	Unlikely	Moderate	Low	<ul style="list-style-type: none"> Install low headroom warning signage adjacent the rung ladders; and Provide highlighting to the pipework located at the base of the right ladder. 	Photos 5-6	Level 34 E3
5	Level 1, OSD Tank Room	Inspecting penetrations and OSD tank maintenance	Person falling off tank	Single hand carried tools	Yes	Yes	No	Flat	No	Unlikely	Good	Quarterly	Specialist	2m to 6 m	Flat hard stand	<ul style="list-style-type: none"> Access to the top of the tank was provided via a fixed step ladder; and Guard railing was provided to top of the tank. 	<ul style="list-style-type: none"> Inspection tags for anchor points were out of date; and Contractors undertaking inspections of fire penetrations were noted to have to stand adjacent the unprotected ladder edge. 	Unlikely	Major	Medium	<ul style="list-style-type: none"> Engage a competent person to inspect and maintain anchor points on an annual basis; and Install a ladder gate to the top of the step ladder to reduce the risk of falls. 	Photos 7-8	Level 1 C3 & D3
6	Podium 3 - Eastern Elevation Roof	Roof maintenance	Person falling off roof	Single hand carried tools	No	Yes	Yes	Flat	Yes	Unlikely	Good	Fortnightly	Maintenance personnel	> 6m	Flat hard stand	<ul style="list-style-type: none"> Fixed rung ladders provided to access the upper corrugated roof area; and Anchor points and a static line were provided to the corrugated roof area, last inspected 25/05/2021. 	No deficiencies observed	Rare	Major	Low	No additional risk controls	-	-
7	Podium 3 - Western Elevation Roof	Glass roof maintenance	Person falling off roof	Single hand carried tools	No	Yes	Yes	< 15 Deg	Yes	Thoroughfare	Good	Fortnightly	Maintenance personnel	> 6m	Flat hard stand	<ul style="list-style-type: none"> Access was secured with signage stating 'No Entry Authorised Persons Only' displayed at entry; and Anchor points were provided, last inspected 25/05/2021. 	Glass safe weight limit was not observed to be displayed.	Unlikely	Major	Medium	Install a sign displaying the Safe Weight Limit (SWL) of the glass.	Photo 9	Level P3 C3

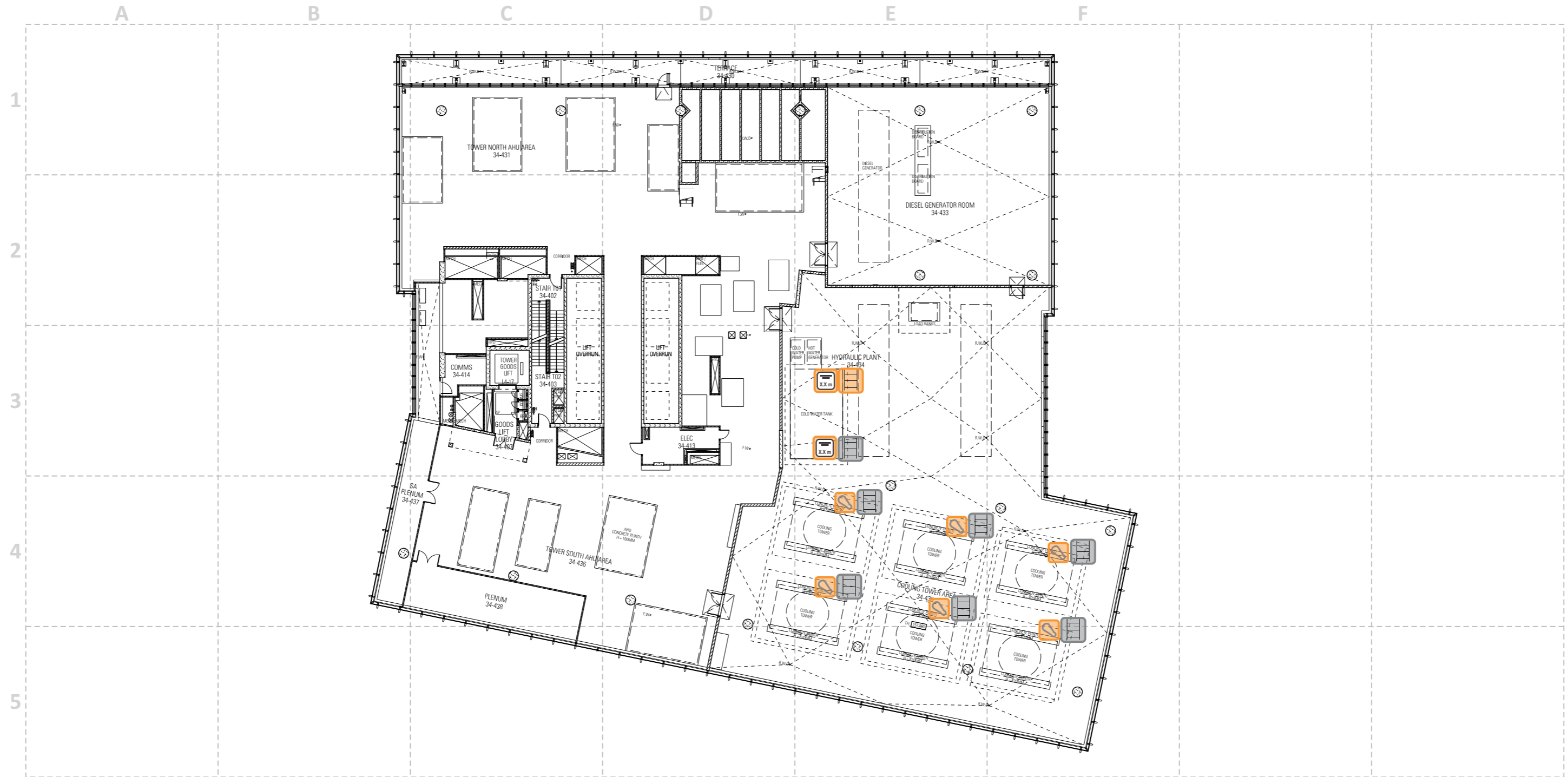
Appendix D - Work At Height Risk Assessment

Item #	Location	Activity	Factors Affecting Likelihood of Fall										Factors Affecting Consequence of Fall		Current Risk Controls	Deficiencies	Likelihood	Consequence	Risk	Recommended Additional Risk Controls	Photo Reference	Map Reference	
			Hazard Description	Carry Equipment	Three points of contact	Work within 2 m of edge	Operator facing the edge	Pitch	Trip Hazard Present	Occupancy below	Condition / maintenance of equipment	Frequency of Access	Access By	Height of fall									Nature of landing
8	Podium 3 - Western Elevation Roof	Accessing the roof	Person falling off roof	Single hand carried tools	No	Yes	Yes	Flat	Yes	Unlikely	Good	Fortnightly	Maintenance personnel	> 6m	Flat hard stand	<ul style="list-style-type: none"> Access was secured with signage stating 'No Entry Authorised Persons Only' displayed at entry; and Anchor points were provided, last inspected 25/05/2021. 	Building materials were stored in front of the door, obstructing access.	Rare	Major	Low	Remove building materials obstructing the doorway.	Photo 9	Level P3 C3 & D3
9	Exterior, Ground Level, Northern Awning	Awning Maintenance	Person falling off roof	Single hand carried tools	No	Yes	Yes	< 15 Deg	No	Thoroughfare	Good	Quarterly	Maintenance personnel	2m to 6 m	Flat hard stand	<ul style="list-style-type: none"> Ladder bracket provided with first man up stop; and Static line provided, last inspected 24/05/2021. 	No deficiencies observed	Rare	Major	Low	No additional risk controls	-	-

Appendix D: Schematics

4 Parramatta Square

Level 34, Working at Heights Control Measures



Not to scale - All locations are approximate



Level 1,
71 Longueville Rd,
Lane Cove NSW 2066

prensa.com.au
P: (02) 8968 2500
F: (02) 8968 2599

Client No: W0045 Job No: 96452S

Client: Walker Corporation

Project: 4 Parramatta Square Working at Heights Assessment

Address:
4 Parramatta Square,
12 Darcy Street, Parramatta NSW 2150

Legend:



Proposed install highlighting to pipework.



Corroded Carabiner.



Low head height. Proposed install warning signage.



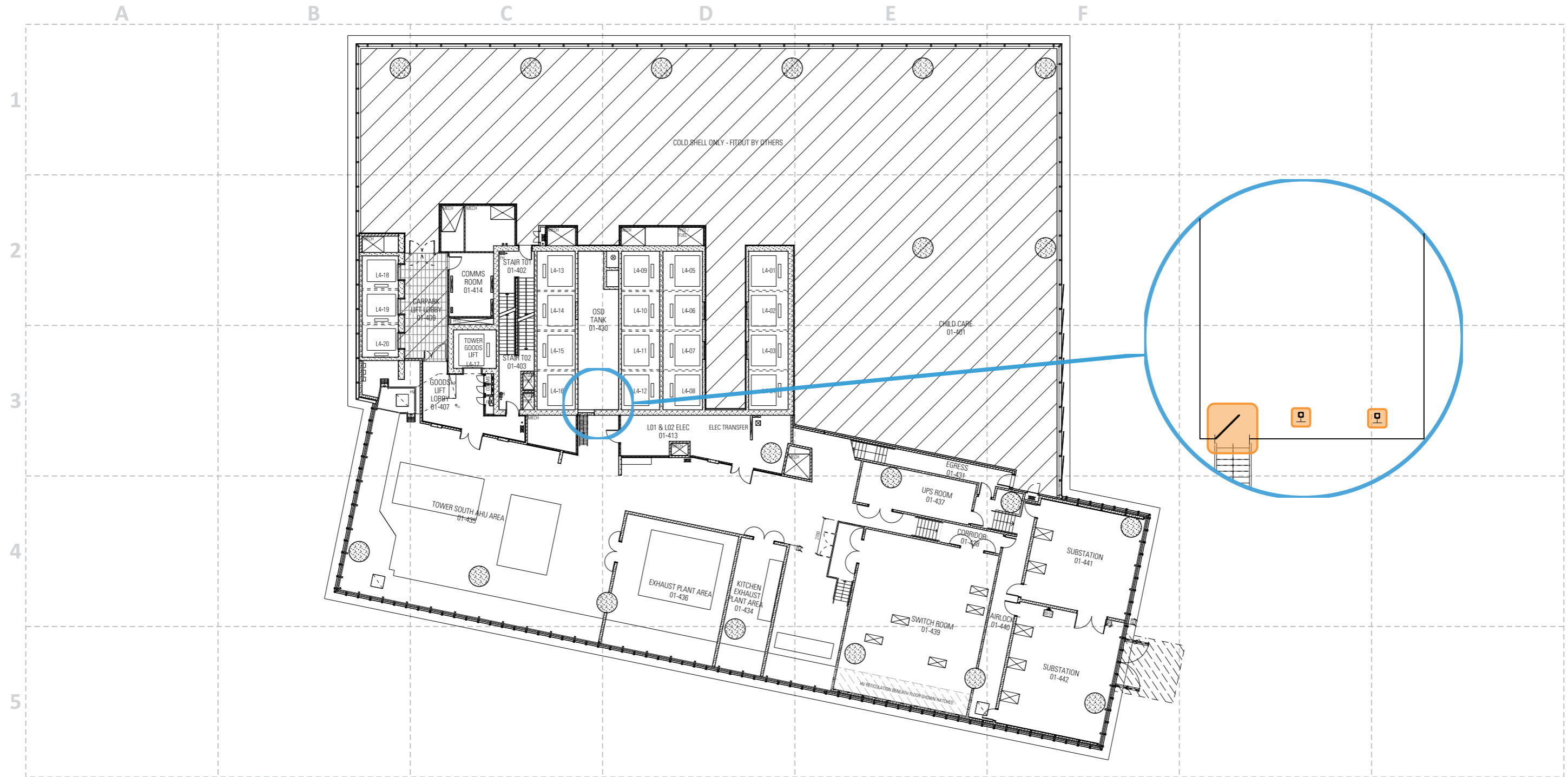
Pre-existing rung ladder.



File Name: Level 34, Plant Room - WAH Controls			Version: 1
Drawn By: DTS	Checked By: DLH	Date: 11/10/2021	Figure number: 1

4 Parramatta Square

Level 1, Working at Heights Control Measures



Not to scale - All locations are approximate



Client No: W0045 Job No: 96454S
 Client: Walker Corporation
 Project: 4 Parramatta Square Working at Heights Assessment
 Address:
 4 Parramatta Square,
 12 Darcy Street, Parramatta NSW 2150

- Legend:
- Existing Anchor Point with out of date tag.
 - Proposed Installation of a Ladder Gate



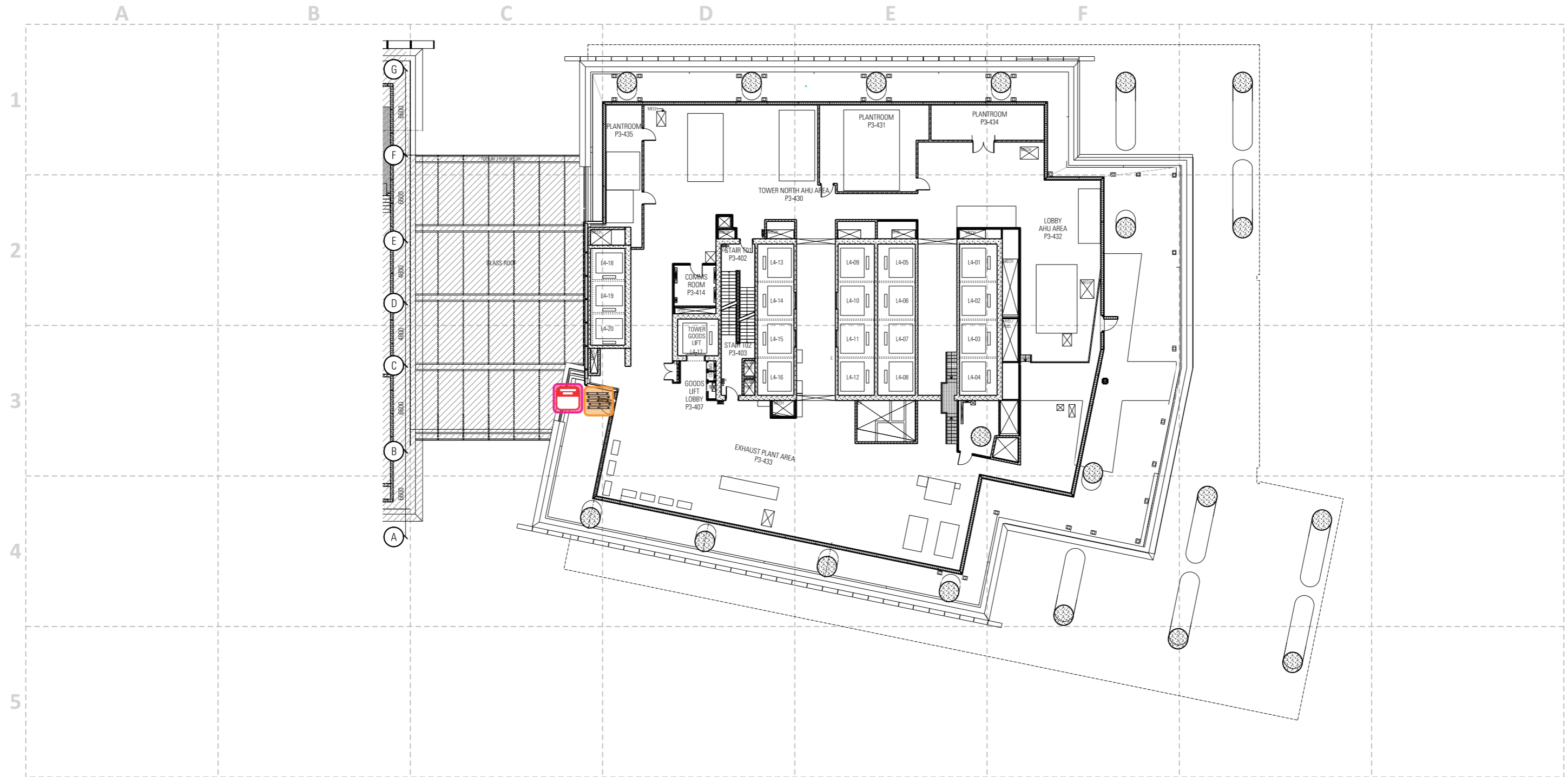
Level 1,
 71 Longueville Rd,
 Lane Cove NSW 2066

prensa.com.au
 P: (02) 8968 2500
 F: (02) 8968 2599

File Name: Level 1, Plant Room - WAH Controls			Version: 1
Drawn By: DTS	Checked By: DLH	Date: 11/10/2021	Figure number: 1

4 Parramatta Square

Level P3, Working at Heights Control Measures



Not to scale - All locations are approximate



Level 1,
71 Longueville Rd,
Lane Cove NSW 2066

prensa.com.au
P: (02) 8968 2500
F: (02) 8968 2599

Client No: W0045 Job No: 96452S

Client: Walker Corporation

Project: 4 Parramatta Square Plant Risk Assessment

Address:
4 Parramatta Square,
12 Darcy Street, Parramatta NSW 2150

Legend:



Stored Building Materials near walkway.



Proposed location for Safe Weight Limit signage.



File Name: Level P3, Plant Room - WAH Controls			Version: 1
Drawn By: DTS	Checked By: DLH	Date: 11/10/2021	Figure number: 1